

APPAREL INSTITUTE

INSTITUTIONAL STUDIO

5TH SEM

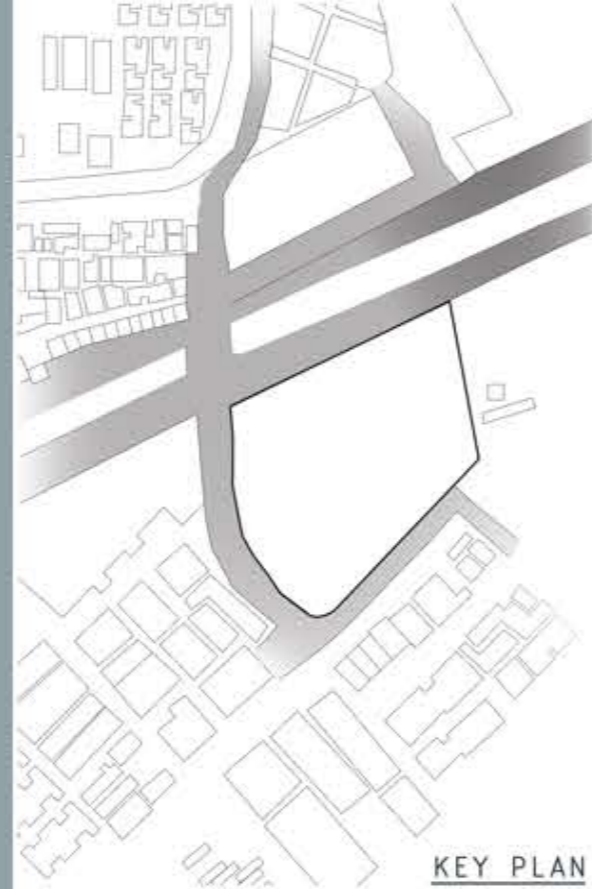
SITE - SURAT, GUJARAT

DECONSTRUCTIVISM IS THE FINISHED VISUAL APPEARANCE WHICH IS CHARACTERISED BY UNPREDICTABILITY AND CONTROLLED CHAOS.

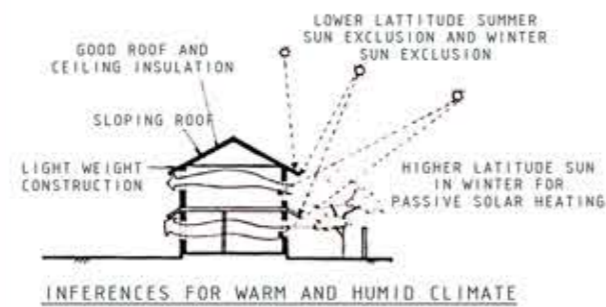
THE STUDIO INTENDED TO DEVELOP A PUBLIC PROJECT FOR AN INSTITUTIONAL BUILDING IN ACCORDANCE WITH A COHERENT ARCHITECTURAL IDEA AND IN RESPONSE TO A COMPLEX FUNCTIONAL PROGRAM.

THE FORM AND THE MATERIAL WERE TO BE USED APPROPRIATELY, AND HIERARCHICAL THINKING WAS TO BE APPLIED TO GIVE SIGNIFICANCE AND MEANING TO SPACES DEPENDING UPON THE USE OF EACH SPACE.

AN APPAREL INSTITUTE WAS TO BE DESIGNED IN THE TEXTILE CITY OF SURAT. THE CORE FUNCTIONS INCLUDED THE STUDIOS, LECTURE ROOMS, LABORATORIES, FASHION ARENA, LIBRARY, WORKSHOPS, AND AN EXHIBITION SPACE, ETC. WITH A PROPER LANDSCAPE.



KEY PLAN



INFERENCES FOR WARM AND HUMID CLIMATE

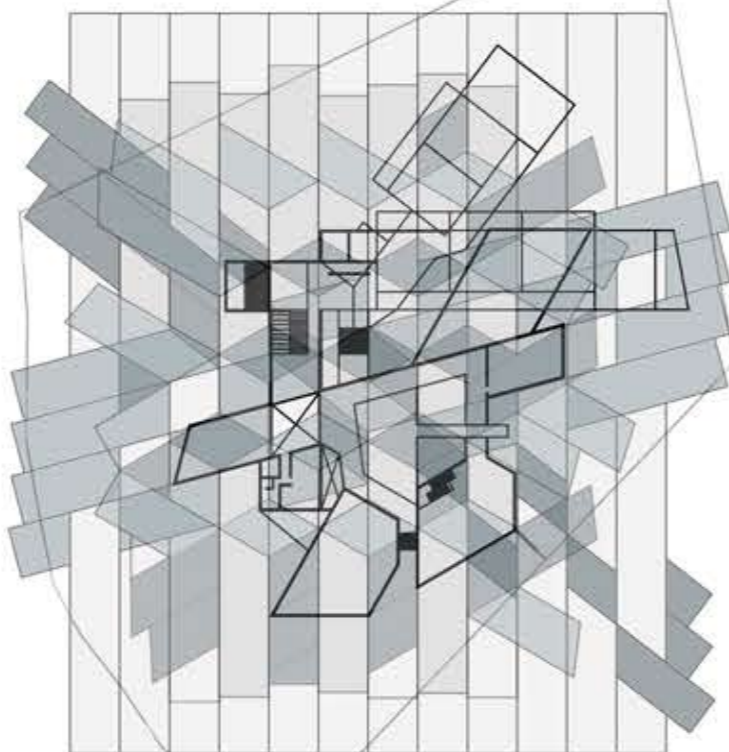


SKYLINE OF SURAT CITY

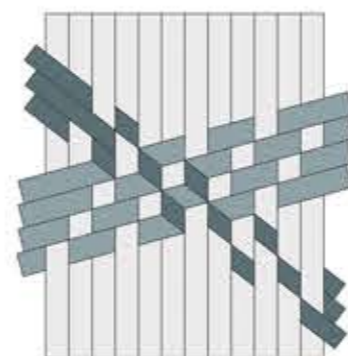
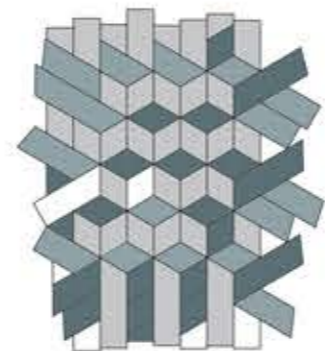
AS SURAT IS MOVING TOWARDS MODERNIZATION AND APPAREL INSTITUTE DEMANDING AN ABSTRACT FORM LEAD THE DESIGN TO GO ALONG WITH THE STYLE OF DECONSTRUCTIVISM.

THE SITE IS LOCATED IN THE CORE AREA OF TEXTILE MARKET. AS SURAT IS IN WARM AND HUMID CLIMATE ZONE, CROSS VENTILATION, CONDUCTION, MORE EXPOSED SURFACES, SINGLE BAY STRUCTURE ETC. ARE SOME POINT WHICH WERE KEPT IN MIND WHILE DESIGNING.

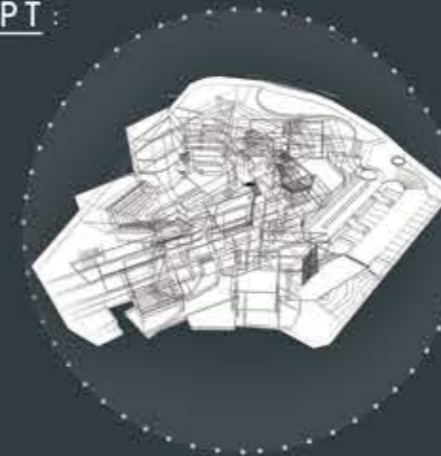
DERIVING LAYOUT PLAN



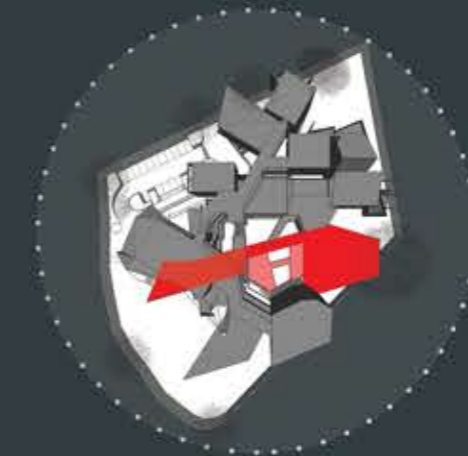
WEAVING PATTERNS :



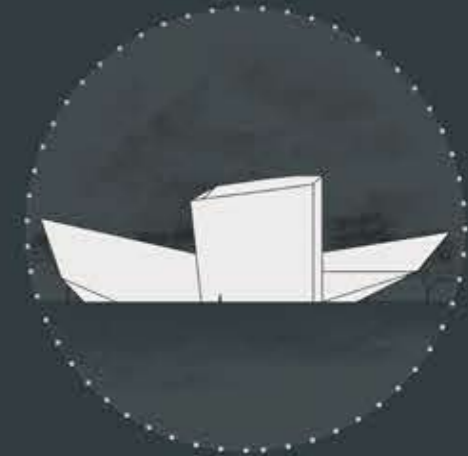
CONCEPT :



DECONSTRUCTIVISM OFTEN MANIPULATES THE STRUCTURE'S SURFACE SKIN AND CREATES NON RECTILINEAR SHAPES WHICH APPEAR TO DISTORT AND DISLOCATE ELEMENTS OF ARCHITECTURE.



THE MAIN SPINE, CONNECTING THE SPACES, IS THE KEY FEATURE CREATING IT AS A MOST HAPPENING SPACE IN THE DESIGN.



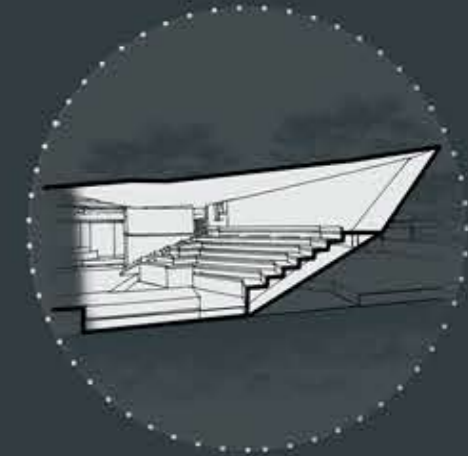
THIS IS AN AGGRESSIVE FORM OF GEOMETRIC DESIGN, PURE AND IRREGULAR, WHERE THE ENORMOUS MASSES TELLS YOU HOW IMPOSING THIS STRUCTURE IS.



THE PASSAGES ARE CREATED IN FORM OF BRIDGES IN DIFFERENT DIRECTIONS AND THE TERRACE GARDENS ARE PROVIDED WHICH ACTS AS A GATHERING SPACE, BREAKING THE MUNDANENESS OF THE PASSAGE.

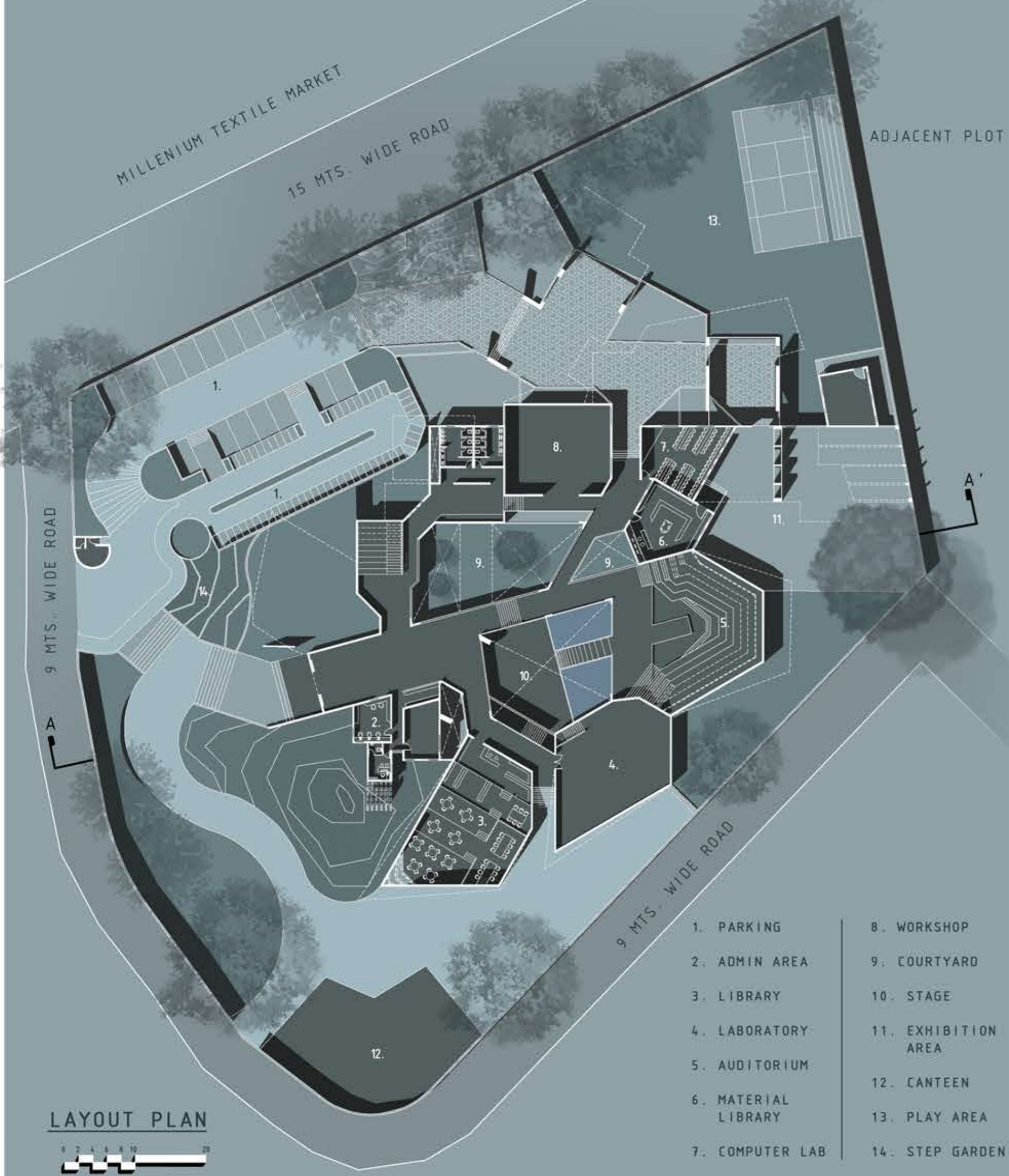


THE STUDIO - CORE FUNCTION OF THE INSTITUTE, INCLUDES FORMAL SPACE WITH SEMI COVERED INFORMAL SPACE WHICH LINKS TO THE NATURE.

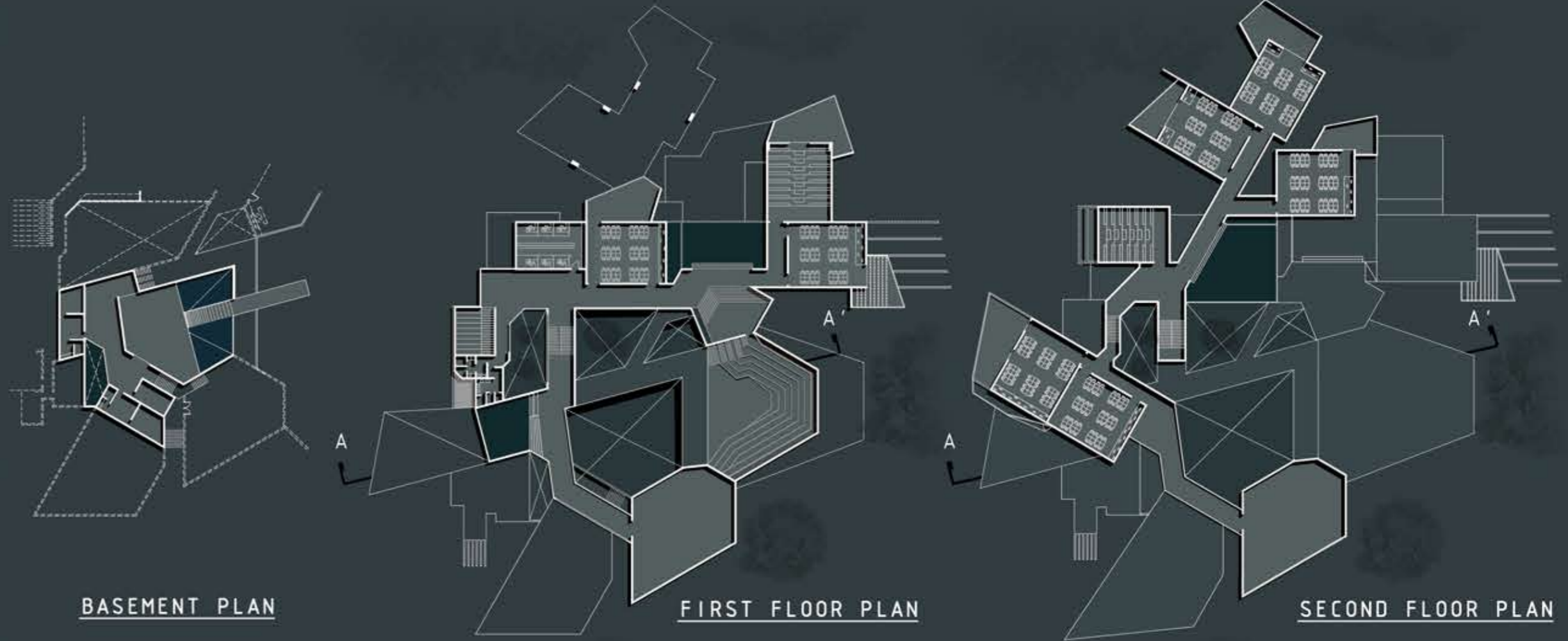


THE LEVELS WHICH ARE CREATED HAS AN IMPACT IN FORMING AN UNPREDICTABLE FORM WITH CONTROLLED CHAOS WHICH APPEARS AS A DISTORTED STRUCTURE.

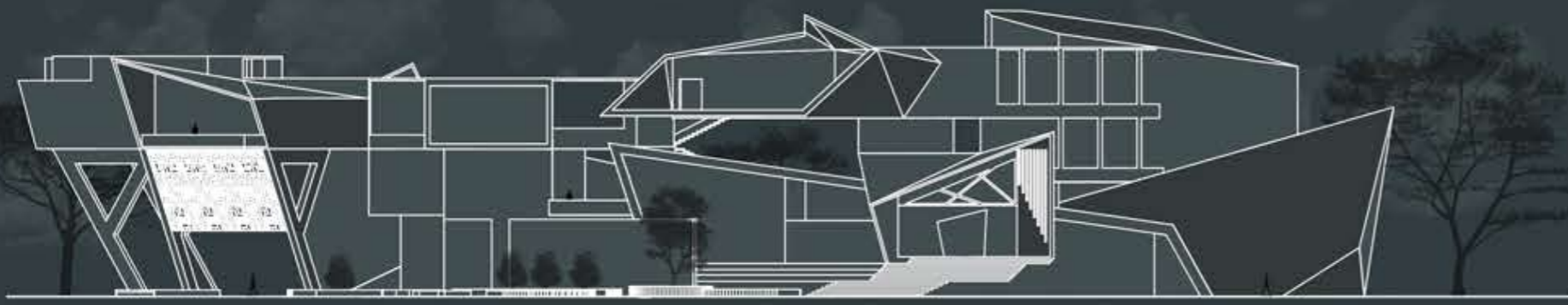




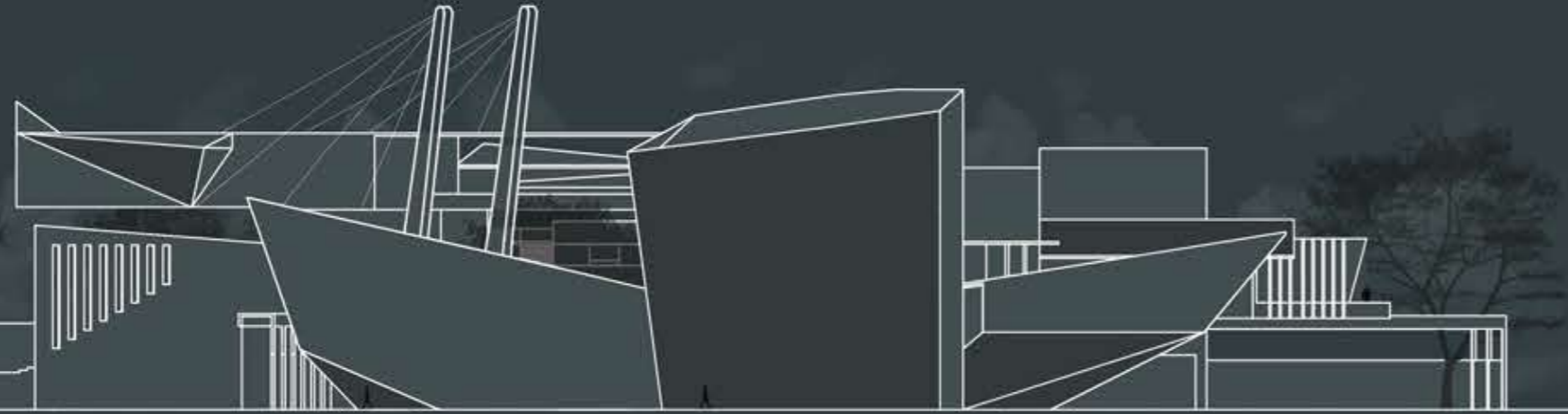
LAYOUT PLAN
0 2 4 6 8 10 20



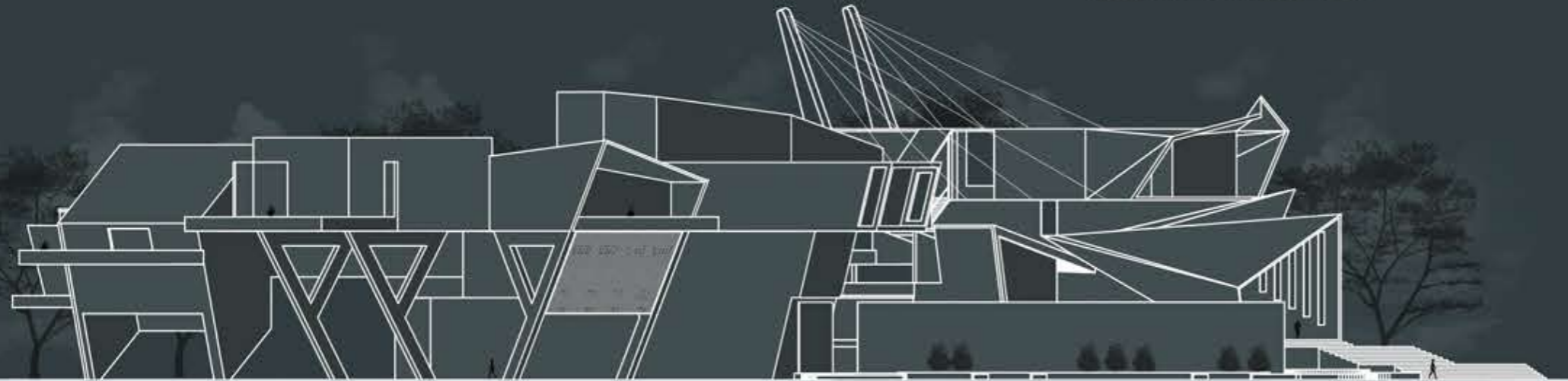
THE STRUCTURE WAS RAISED ON A HIGH PLATFORM TO GIVE TO ESSENCE OF GRANDNESS TO THE PUBLIC BUILDING. COURTYARDS ARE PROVIDED IN THE FORM OF VOIDS IN THE FORM TO IMPROVE THE MICRO CLIMATE OF THE STRUCTURE, HELPING IN AIR CIRCULATION THROUGH STACK VENTILATION. THE FLOORS ABOVE ARE SINGLE BAY, TO IMPROVE THE CROSS VENTILATION. THE MAIN SPINE COMPRISES OF A DOUBLE HEIGHTED SPACE ENTRANCE, PASSAGE WITH COURTYARDS ON EITHER SIDES LEADING TO THE FASHION ARENA.



WEST ELEVATION



NORTH ELEVATION



SOUTH ELEVATION



SECTION AA'



WAY TOWARDS EXHIBITION

THE ANGULAR VOLUMES WITH ORIGAMI LIKE FOLDS
CREATES A INSTITUTE WITH COURTYARDS, GARDENS
AND LANDSCAPES TERRACES.

THE SEMI-COVERED SPACES WERE PROVIDED AT
EVERY LEVEL, WITH VARIED SIZES AND SHAPES
CREATING IT AS A LARGE OUTDOOR SPACES TO
CONNECT WITH THE NATURE.



NORTH EAST VIEW



3D VIEW OF
FASHION INSTITUTE