

INSTITUTIONAL STUDIO

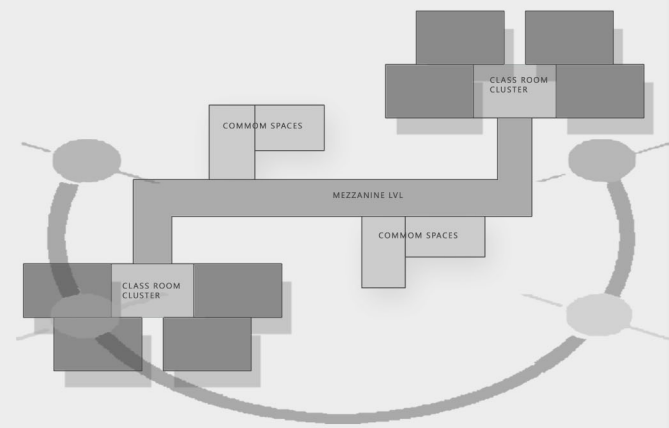
FACULTY: PALLAVI MAHIDA
PRIYANSHU SHRIVASTAVA

DUE TO MODERN TEACHING SYSTEM, THE NEW GENERATION IS GRADUALLY FORGETTING OUR TRADITION AND CULTURE. AND HENCE, TO AWARE THEM, MODERN TEACHING SYSTEM IS DIVIDED INTO THREE PARTS.

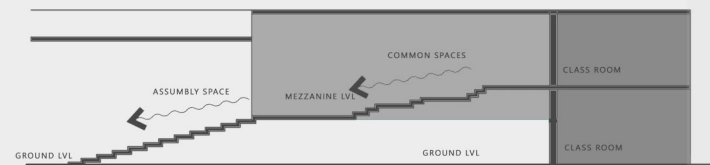
- 1) BRAHMAVIDYA - KNOWLEDGE GAINED THROUGH SPIRITUAL EDUCATION.
- 2) SADVIDYA - LEARNING THROUGH THE TRADITIONAL EDUCATION.
- 3) THE MODERN EDUCATION WITH THE HELP OF ADVANCED TECHNOLOGY

PLANNING WAS DONE WITH VEDIC TOWN PLANNING SYSTEM. EVOPORATIVE COOLING SYSTEM WAS PROVIDED FOR NATURAL VENTILATION THE BUILDING WAS DIVIDED INTO THREE FLOOR GROUND FLOOR , MEZZANINE FLOOR AND THE FIRST FLOR.

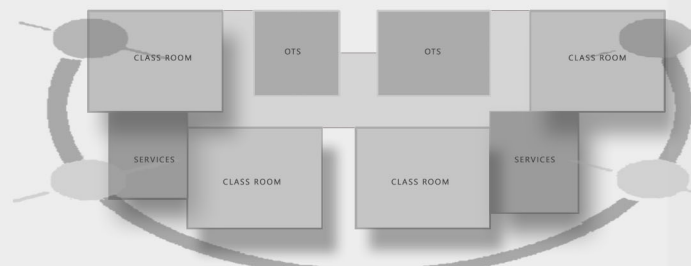
GROUND FLOOR FIRST FLOOR-CLASSROOM , MEZZANINE FLOOR - COMMON SPACES, THIS WAS DONE FOR THE EASY ACCESS BY THE STUDENT OF THE BOTH FLOOR. ASSEMBLY AND AUDITORIUM DESGIN IN SUCH A WAY THAT CONNECTED TO GROUND FLOOR AND MEZZANINE LVL. TO FEEL THE BUILDING MARG WITH THE GROUND AND NATURE.



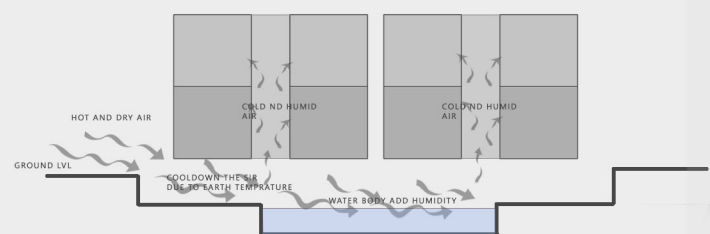
BEGINING WITH VEDIC TOWN PLANNING IS DONE IN SUCH A WAY CORE ACTIVITIES ARE PLACED IN NORTH SOUTH DIRECTION .



DESCRIBING THE PROCESS OF MOVING THROUGH SPACES OF BUILDING, THE CONNECTION ARE KEPT FREEFLOWING SO AS TO PROVIDING ADEQUATE SPACE TO ROAM AROUND , ALSO CONNECTING THE STUDENT TO NATURE . STARTING FROM LOW RANGING FIRST FLOOR TO THIRD FLOOR.



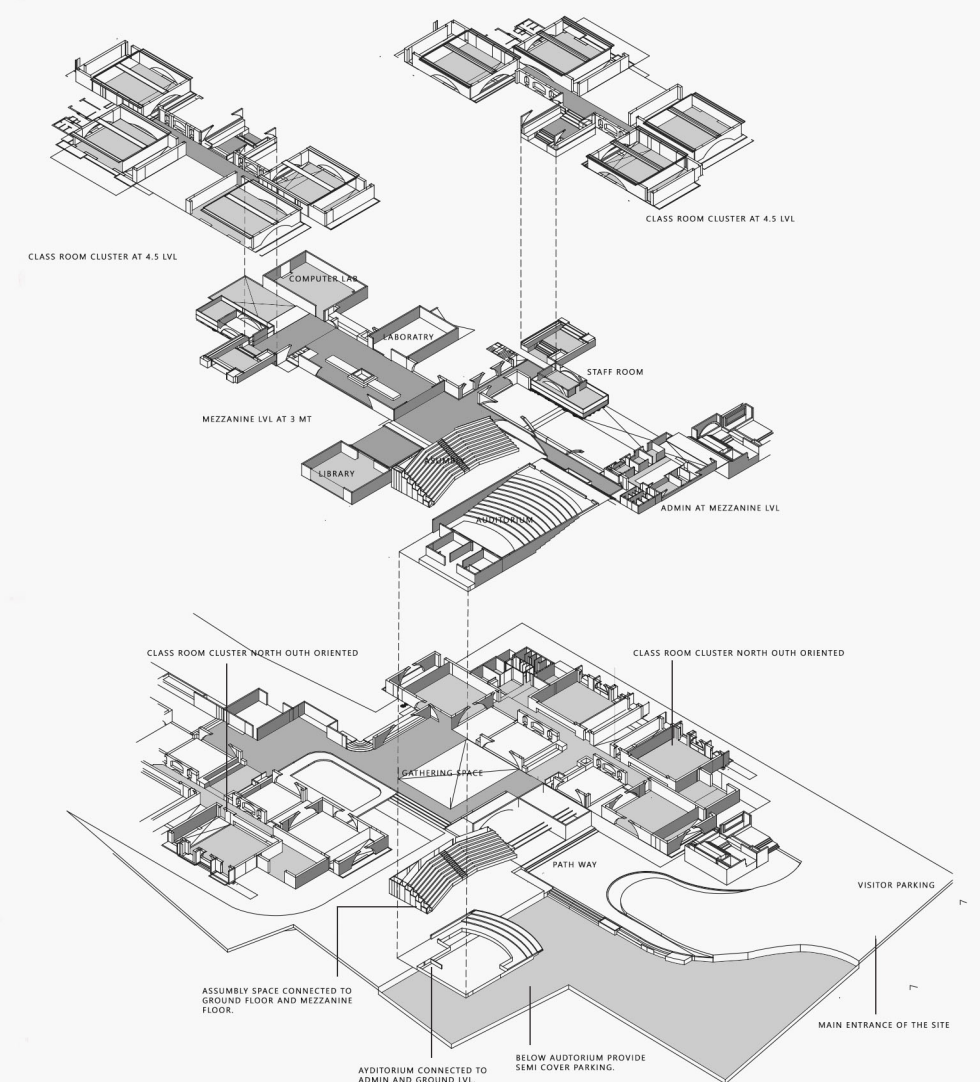
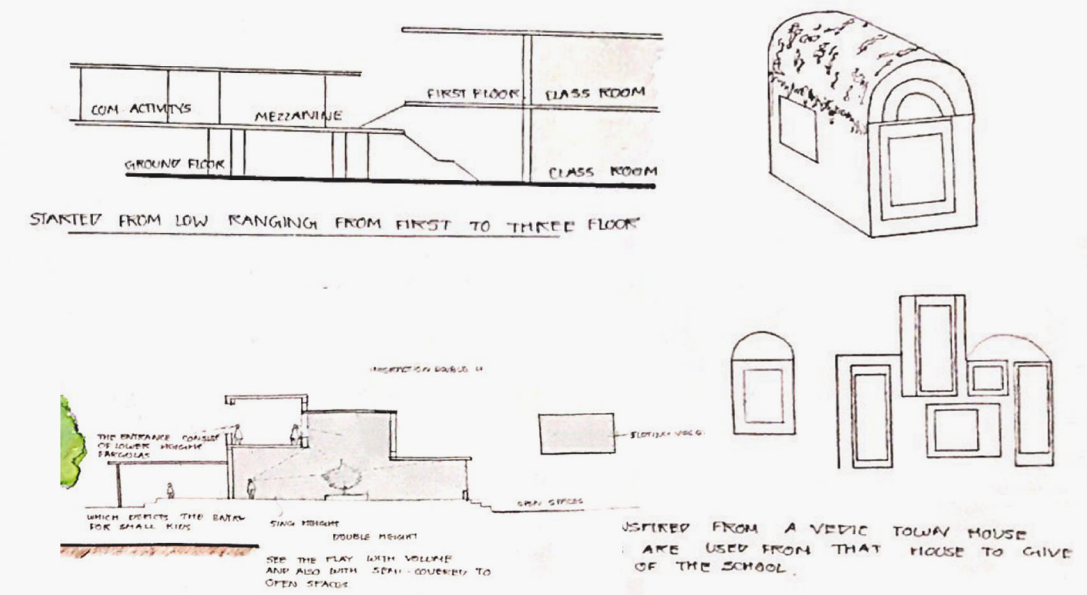
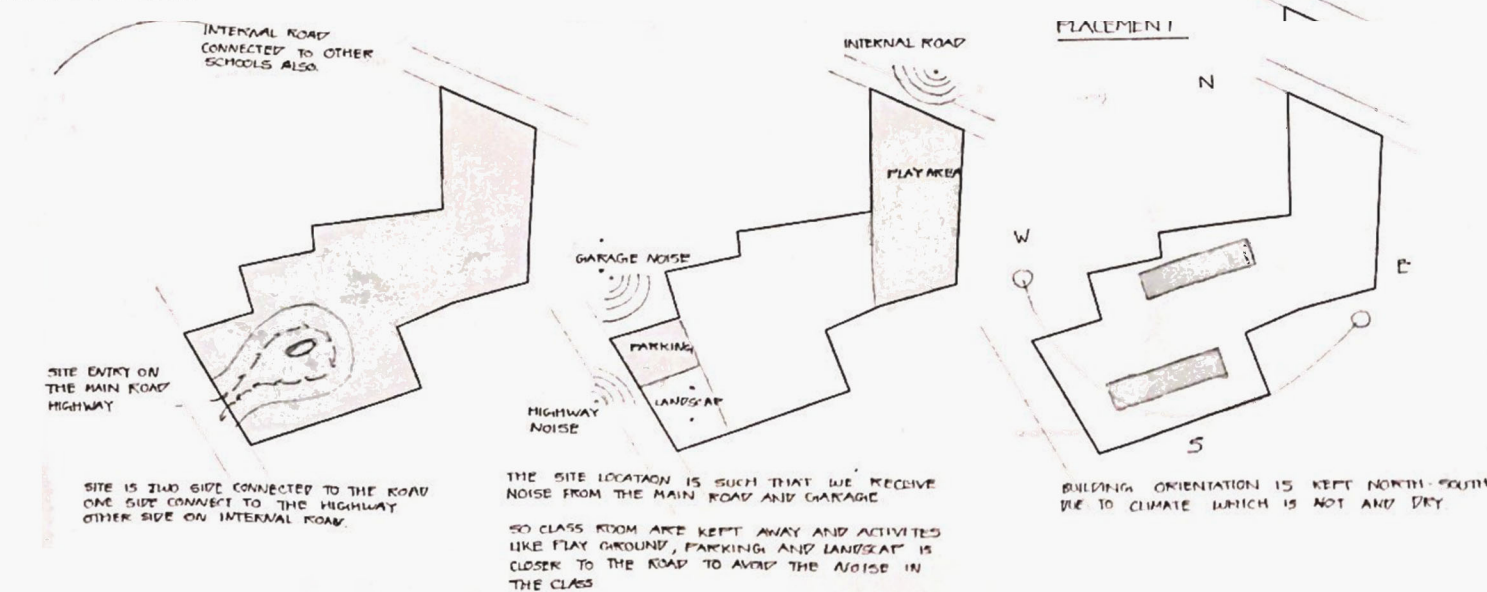
IN CLUSTER CLASSROOM LONGER SIDE FACE NORTH SOUTH SIDE. SERVICES ARE PROVIDED ON EAST AND WEST SIDEIN THE CENTER TWO OTS ARE PROVIDES FOR EVAPORATE COOLING SYSTEM.



IN ANCIENT TIME , NATURAL RESOURCE TO COOL, AS EVOPORATE COOLING IS PRACTICED TO KEEP THE BUILDING COOL.



LAYOUT PLAN



EXTENDED PLANS

