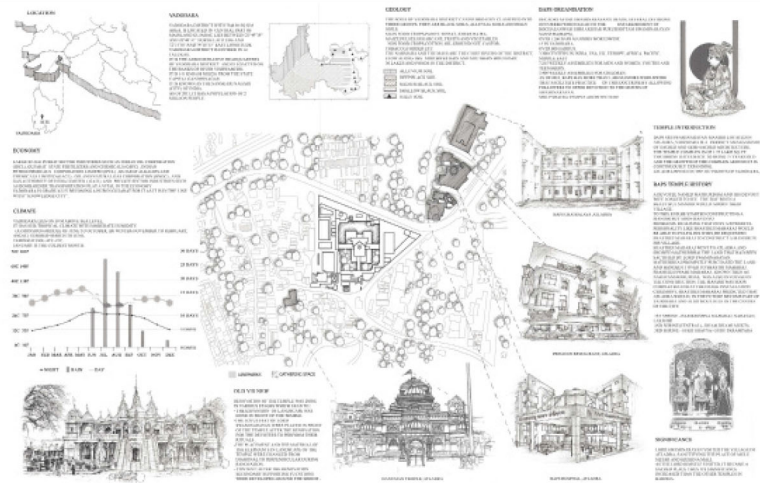


Louis I. Kahn Trophy

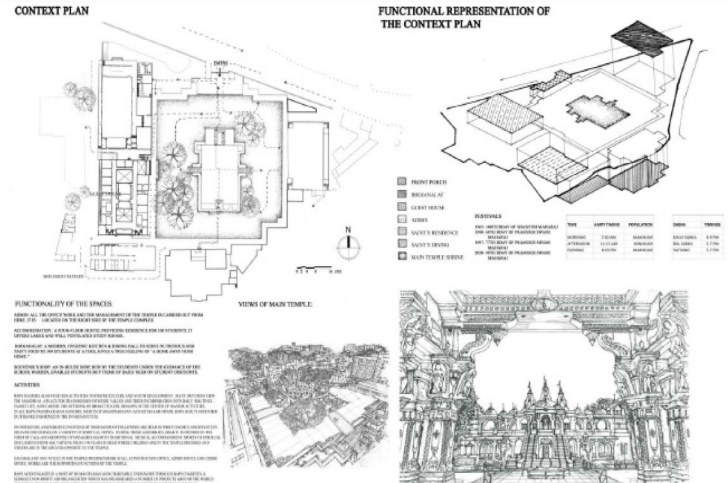
During this era of architecture, it is basically divided into two broad categories- the buildings we observe and the buildings we ignore.

This year the LIK trophy took us on a journey to unravel the lesser known typology of Indian heritage which is worth documenting and studying. According to the brief; a sacred place which has a notable significance in terms of culture, community, crafts and beliefs for more than 50 years which is incomplete without semi-sacred places was a perfect choice. The semi- sacred place could include pravarchan halls, madrasas, meditation halls, dharamshalas and many more.

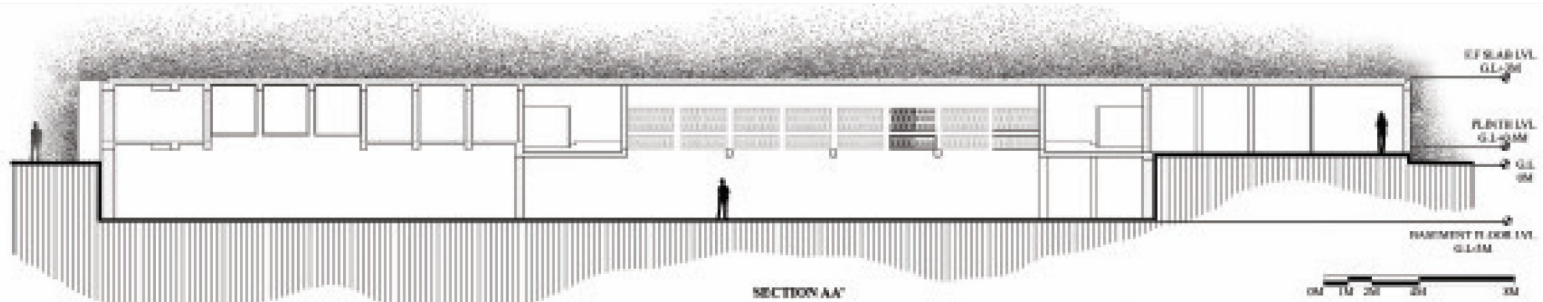
This gave us an experience in the importance of such heritage establishments and a better understanding of the culture of such places.

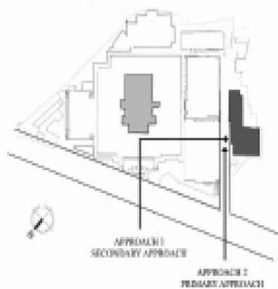
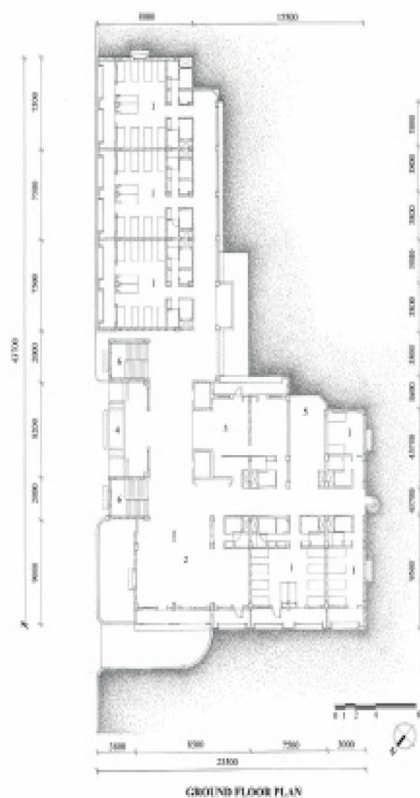


BAPS ATLADRA SITE ANALYSIS LOUIS I. KAHN TROPHY 2019-20 02



BAPS ATLADRA FUNCTIONAL ACTIVITIES LOUIS I. KAHN TROPHY 2019-20 03





- | | |
|-----------------------------------------------------------------------------------------------------------------------------------------------------|------------------------------------------------------------------------------------------------------------------------------------------------------------|
| <ul style="list-style-type: none"> ■ LOCATION- BALPES SWAMINATHAN TEMPLE COMPLEX, ATLARA, MADHARA ■ ARCHITECT- SANKHY PATEL | <ul style="list-style-type: none"> ■ FUNCTION- RESERVE FOR PILGRIMS ■ ORIENTION- ALONG THE S-W TO S-E AXIS (ORIENTATION OF TEMPLE) |
|-----------------------------------------------------------------------------------------------------------------------------------------------------|------------------------------------------------------------------------------------------------------------------------------------------------------------|

- THE PRINCIPAL LOCATION FOR THE BRAT SIDE OF THE TEMPLE THAT PROVIDES SEAT FOR THE VISITORS AND ALSO THE PRINCIPAL STRUCTURE IS MASSIVE AMONG THE WHOLE SITE, HAVING SEVEN FLOORS AND ONE PAVIMENT.

- THE ELEVATION CONSISTS OF ELABORATE WINDOWS ON TWO SIDES TO MERGE WITH THE CONTEXT OF THE TEMPLE. CHAISES ARE PROVIDED ON THE TOP TO GIVE THE ESSENCE OF THE SWAMPARAVAN TEMPLE ARCH.

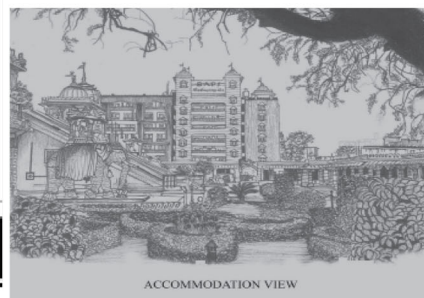
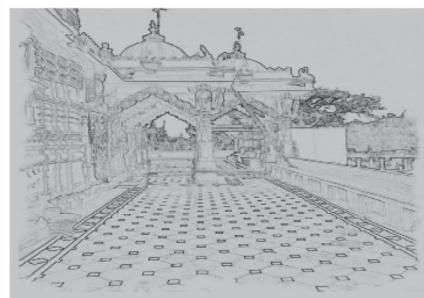
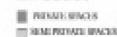
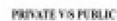
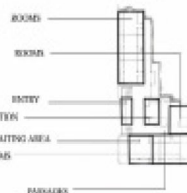
- EVERY YEAR THE TEMPLE ORGANIZES A FESTIVAL WHICH INVITES THOUSANDS OF PEOPLE FROM DIFFERENT CITIES WHO COME TO ENJOY AND PARTICIPATE IN THE HOLY ATMOSPHERE.



- #### ■ LEGEND

1	ROOM
2	ROUTING
3	RECEPTION
4	ENTRY
5	COMMON SPACE
6	STAIRCASE

- THE GUEST HOUSE WITH ITS MODERN CONSTRUCTION AND TRADITIONAL ELEMENTS PERFECTLY SHOWS A NEW SEMI-SACRED SPACE AROUND US.



BAPS ATLADRA GUEST HOUSE

LOUIS I. KAHN TROPHY 2019-20 04



FRONT ELEVATION